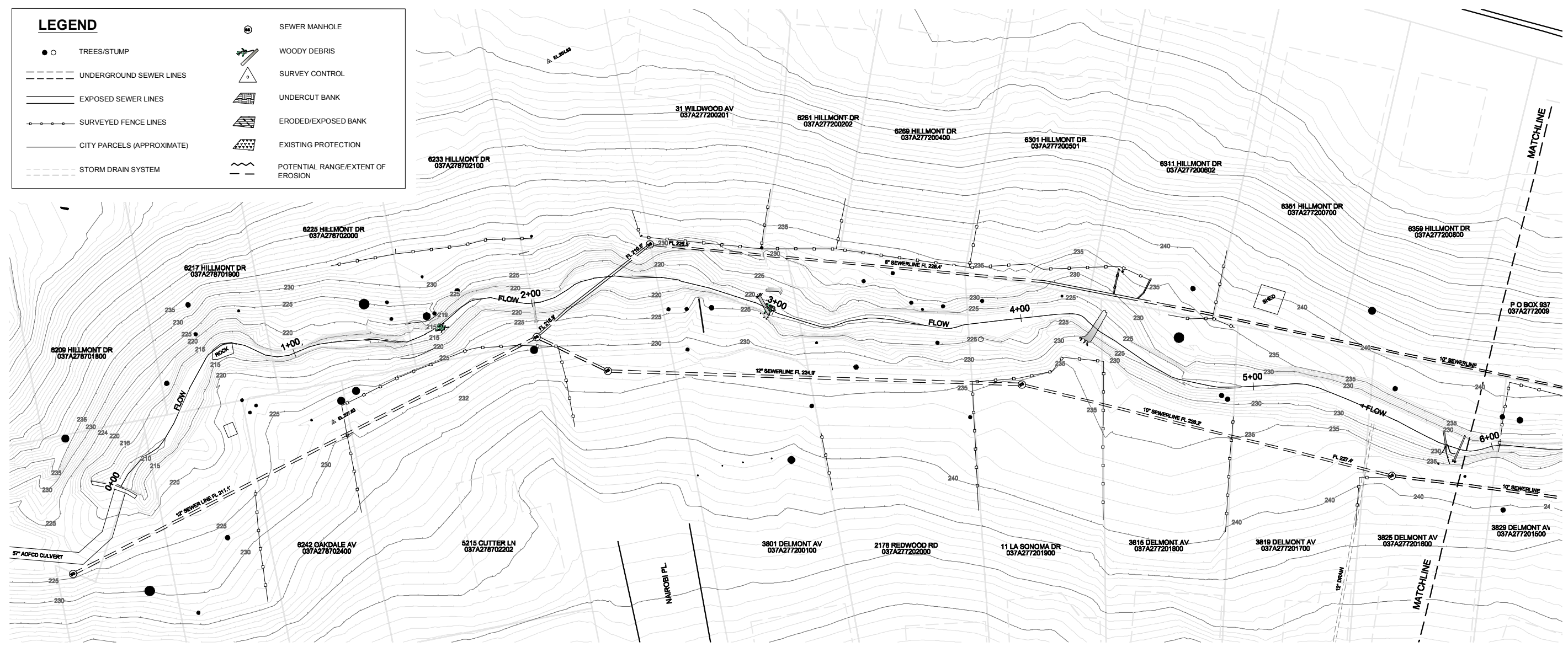
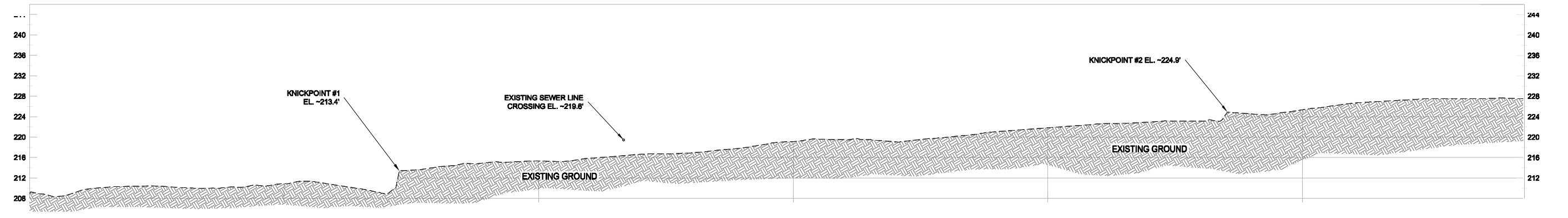


**LEGEND**

- TREES/STUMP
- UNDERGROUND SEWER LINES
- EXPOSED SEWER LINES
- SURVEYED FENCE LINES
- CITY PARCELS (APPROXIMATE)
- STORM DRAIN SYSTEM
- SEWER MANHOLE
- WOODY DEBRIS
- SURVEY CONTROL
- UNDERCUT BANK
- ERODED/EXPOSED BANK
- EXISTING PROTECTION
- POTENTIAL RANGE/EXTENT OF EROSION



**PLAN VIEW**  
SCALE: 1" = 20'



**PROFILE VIEW**  
HORIZONTAL SCALE 1" = 20'  
VERTICAL SCALE 1" = 10'

**CHIMES CREEK BANK STABILIZATION AND  
CHANNEL RESTORATION FEASIBILITY STUDY  
BASEMAP 1**

THIS DRAWING IS NOT FINAL AND IS NOT TO BE USED FOR CONSTRUCTION

DRAWN BY: AAF  
CHECKED BY: ST  
JOB NO.: 280217  
DATE: 09-02-08  
FILE NAME: CHIMES\_RESTORATION.dwg  
CITY OF OAKLAND  
COMMUNITY ECONOMIC DEV. AGENCY  
WATERSHED AND STORMWATER MGMT  
280 FRANK H. OGAWA PLAZA  
SUITE 4314 OAKLAND CA 94612-2034



SURVEY NOTE: THIS MAP REPRESENTS TOPOGRAPHIC FEATURES AND CONTOURS AS SURVEYED BY QUESTA ENGINEERING INC. ON FEB 27TH, MARCH 4TH, AND MARCH 6TH 2009 IN THE CHIMES CREEK WATERSHED. PARCEL DATA IS BASED ON CITY RECORDS AND SHOULD NOT BE USED FOR DETERMINING BOUNDARIES OR EASEMENTS. ELEVATIONS ARE REFERENCED TO THE CITY OF OAKLAND MONUMENT AT THE INTERSECTION OF HILLSMONT AVE. AND ENDENVALE DR. (EL. -201.36 FT).